

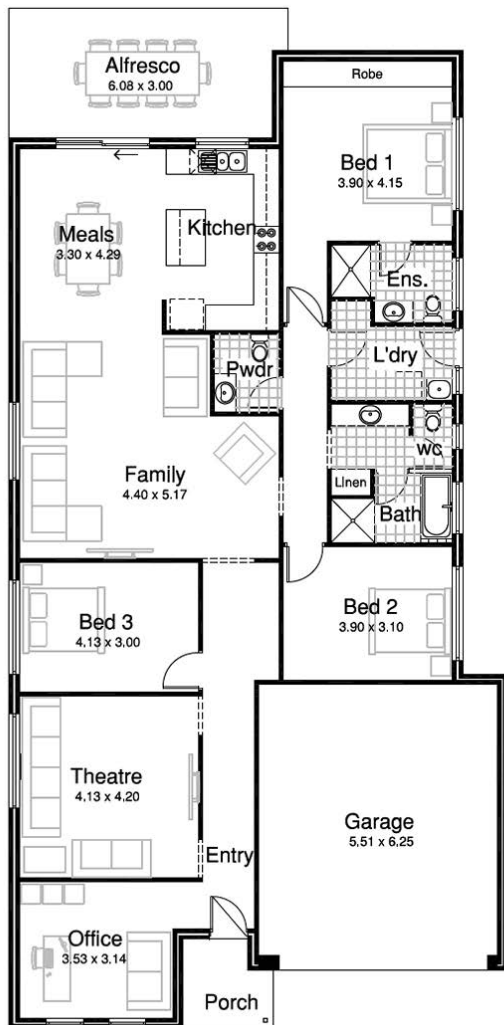


HOUSE & LAND PACKAGE

Lot 824 Trudeau rd, Melton Sth
 Maplewood Estate VIC
 Land Area: 400 m²
 Design: Villa 225

Includes:

- 50 Year Structural Warranty
- Display Home Guarantee
- Fixed Site Cost
- Developer Encumbrances
- Classic Façade
- Classic Inclusions
- Floor Coverings
- Gas Ducted Heating
- Allowance for Completions



HOUSE & LAND ONLY
\$464,950

TURN KEY
\$494,950



Contact your consultant
 for more information



VIC

The floorplan and facade image shown above are for illustration purposes only - please refer to the inclusions column and our website for the exact details of this package. The nominated design may need some modifications to suit council requirements. These packages are also still subject to regulatory approval. The Rendition Group may alter specifications, plans, prices or special offers without notice. Builders License - DB-U 45269. The value of the land in this package is \$255,000.