

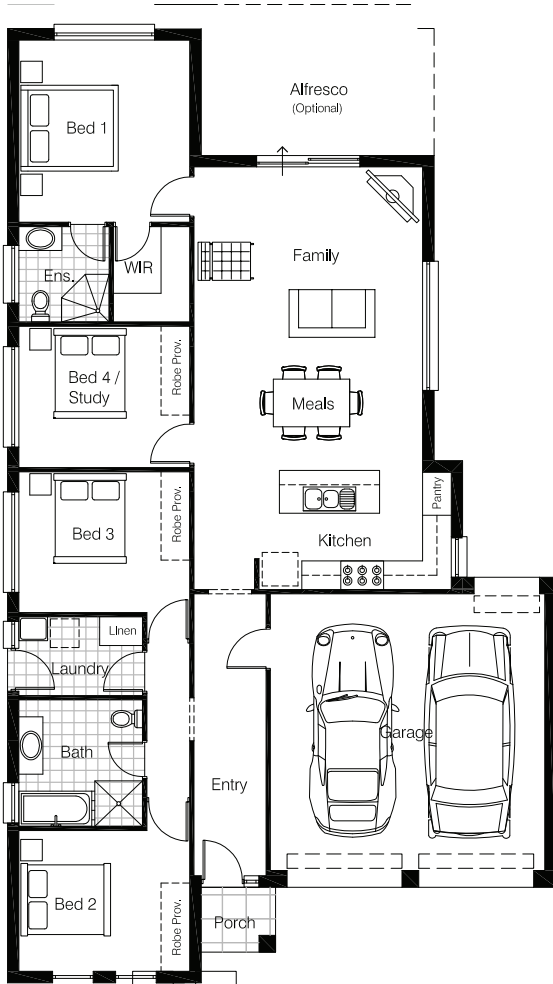


# HOUSE & LAND PACKAGE

Want a different design? just ask us how!

Villa 175 4 2 2 2

Lot 112 Springvale St, Wollert VIC  
Elyssia Estate  
Land Area: 447m<sup>2</sup>



## Includes

- 50 year structural warranty
- Display home guarantee
- Fixed site cost
- Developer encumbrances
- Classic facade
- Classic inclusions
- Flyscreens to all opening windows & sliding doors
- Stainless steel appliances
- Colourbond metal fascia & gutters
- Free standing breakfast bar
- Floor coverings\*
- Gas Ducted Heating
- Allowance for completions\*

House & Land Only  
**\$534,720**

TURN KEY\*  
**\$559,720**



Contact a consultant  
for more information



The floorplan and facade image shown above are for illustration purposes only - please refer to the inclusions column and our website for the exact details of this package. The nominated design may need some modifications to suit council requirements. These packages are also still subject to regulatory approval. The Rendition Group may alter specifications, plans, prices or special offers without notice. Builders License - DB-U 45269. The value of the land in this package is \$354,000