



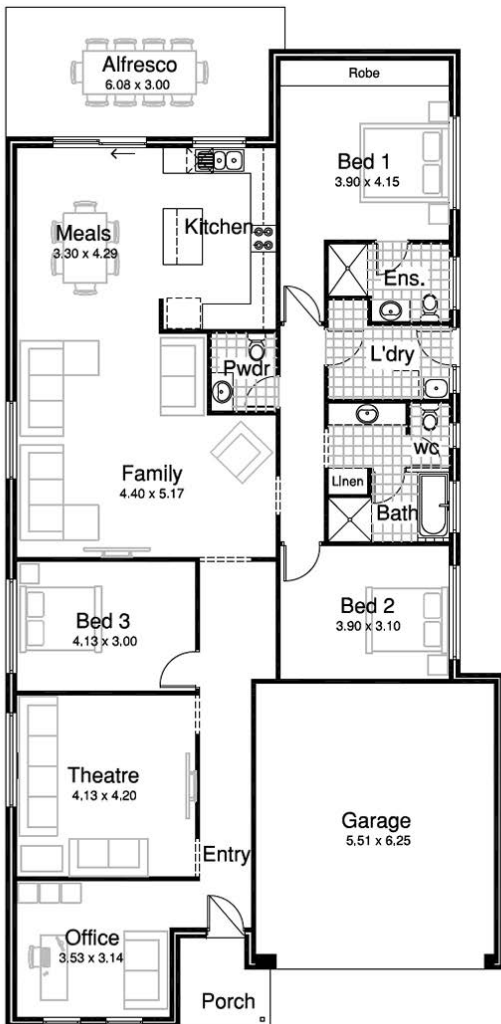
# HOUSE & LAND PACKAGE

Want a different design? just ask us how!

Villa 225



848 Gabbro Way, Wollert Vic  
Lyndarum North Estate  
Land Area: 448m<sup>2</sup>



## Includes:

- 50 Year Structural Warranty
- Display Home Guarantee
- Fixed Site Cost
- Developer Encumbrances
- Classic Façade
- Classic Inclusions
- Flyscreens to all opening windows & sliding doors
- Stainless Steel Appliances
- Colourbond metal fascia & gutters
- Free standing breakfast bar
- Floor Coverings\*
- Gas Ducted Heating
- Allowance for Completions\*

HOUSE & LAND ONLY  
**\$590,120**

TURN KEY\*  
**\$615,120**



Contact your consultant  
for more information



VIC