

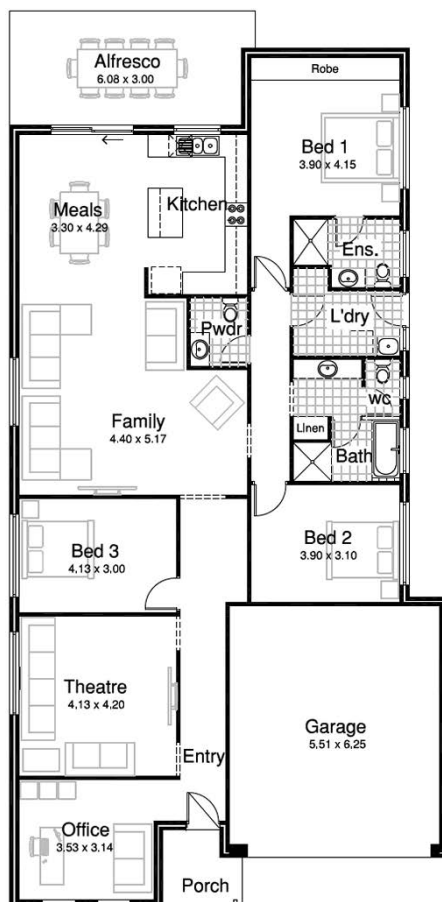


HOUSE & LAND PACKAGE

Want a different design? just ask us how!

Villa 225 3 3 2 2

Lot 3342 Coolbinia Ave, Harpley Views Vic
Land Area: 441m²
Includes



- 50 Year Structural Warranty
- Display Home Guarantee
- Fixed Site Cost
- Developer Encumbrances
- Classic Façade
- Classic Inclusions
- Flyscreens to all opening windows & sliding doors
- Colorbond metal fascia & gutters
- Garage Automatic Door with Remote Control
- Stainless Steel Appliances
- Free Standing Breakfast Bar
- Walk-in Robe Bedroom 1
- Bedroom 2 & 3 sliding robes
- Gas Ducted Heating
- Floor Coverings*
- Allowance for Completions*

HOUSE & LAND ONLY
\$577,350

TURN KEY*
\$600,350



Contact a consultant
for more information



VIC

The floorplan and facade image shown above are for illustration purposes only - please refer to the inclusions column and our website for the exact details of this package. The nominated design may need some modifications to suit council requirements. These packages are also still subject to regulatory approval. The Rendition Group may alter specifications, plans, prices or special offers without notice. Builders License - CBD-U 59336. The value of the land in this package is \$372,000