



HOUSE & LAND PACKAGE

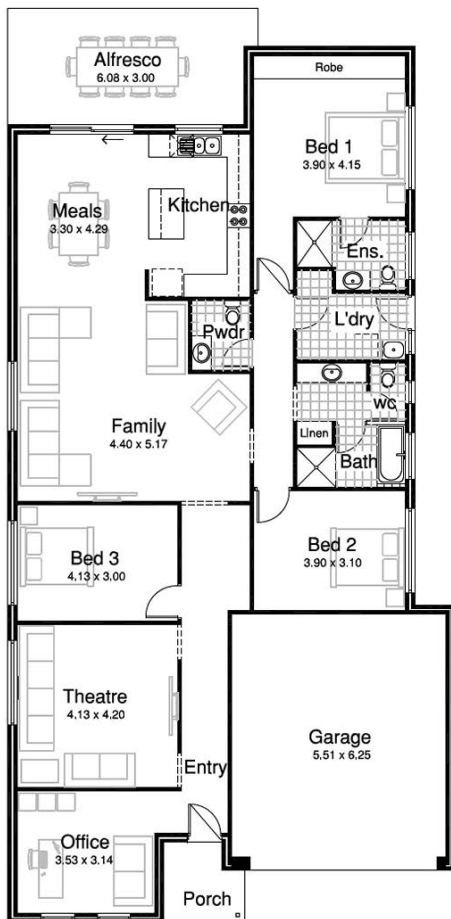
Villa 225



Lot 830 Trudeau Rd, Melton South Vic
Land Area: 448m²

Includes

- 50 Year Structural Warranty
- Display Home Guarantee
- Fixed Site Cost
- Developer Encumbrances
- Classic Façade
- Classic Inclusions
- Flyscreens to all opening windows & sliding doors
- Termite treatment
- Colorbond metal fascia & gutters
- Garage Automatic Door with Remote Control
- Stainless Steel Appliances
- Free Standing Breakfast Bar
- Walk-in Robe Bedroom 1
- Bedroom 2 & 3 sliding robes
- Hot Water Unit
- Gas Ducted Heating
- Floor Coverings*
- Allowance for Completions*



HOUSE & LAND ONLY
\$485,950

TURN KEY*
\$516,950

OTHER DESIGNS AVAILABLE



Contact a consultant
for more information



VIC

The floorplan and façade image shown above are for illustration purposes only - please refer to the inclusions column and our website for the exact details of this package. The nominated design may need some modifications to suit council requirements. These packages are also still subject to regulatory approval. The Rendition Group may alter specifications, plans, prices or special offers without notice. Builders License - CDB-U 59336. The value of the land in this package is \$276,000