



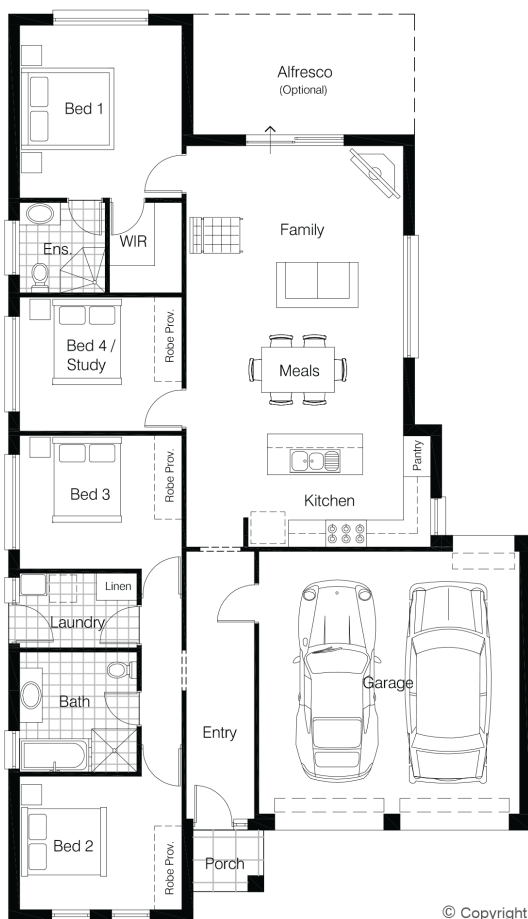
HOUSE & LAND PACKAGE

Want a different design? just ask us how!

Villa 175 (mod) 4 2 2 2

Lot 951 Skyway Ave, Lyndarum North
Land Area: 327m²

Only \$480,850



© Copyright

The Above Price Includes:

- 50 year structural warranty
- Display home guarantee
- 2550mm ceiling height
- Fixed site cost
- Classic Inclusions ([ask for brochure](#))
- Gas ducted heating
- Ezi-plan ([ask for info sheet](#))

Add Turnkey: \$20,000

- All features & inclusions in the above price plus
- Carpets to bedrooms
- Laminate flooring to living areas
- Paving to driveway & perimeter
- Provision for fencing
- Provision for landscaping



Contact a consultant
for more information



VIC

The floorplan and facade image shown above are for illustration purposes only - please refer to the inclusions column and our website for the exact details of this package. The nominated design may need some modifications to suit council requirements. These packages are also still subject to regulatory approval. The Rendition Group may alter specifications, plans, prices or special offers without notice. Builders License - CDB-U 59336. The value of the land in this package is \$293,000